

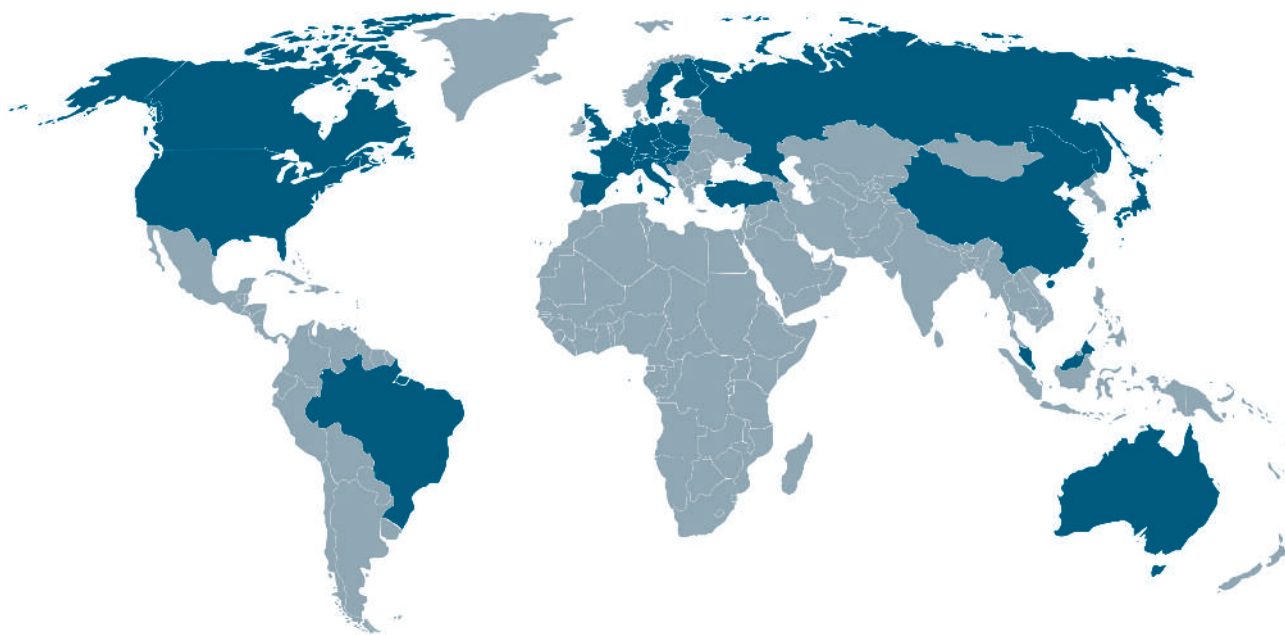


**Develop Your Skills to Achieve
Business Process Excellence**

IDS Scheer Academy

IDS Scheer Academy Worldwide Trainings and Workshops

- ▶ Austria
- ▶ Brazil
- ▶ Belgium
- ▶ Canada
- ▶ China
- ▶ Croatia
- ▶ Czech Republic
- ▶ Finland
- ▶ France
- ▶ Germany
- ▶ Hungary
- ▶ Japan
- ▶ Luxembourg
- ▶ Netherlands
- ▶ Poland
- ▶ Russia
- ▶ Singapore
- ▶ Slovakia
- ▶ Slovenia
- ▶ Sweden
- ▶ Switzerland
- ▶ Turkey
- ▶ United Kingdom
- ▶ USA



Want more information?

- ▶ Please contact your ARIS Academy. Find the relevant addresses in the section "Your Points of Contact" in this brochure or online at www.ids-scheer.com/academy. Course details and registration are also available online!

BPM Without Limits – Open Business Process Management with ARIS Platform



Changing markets and new technologies are forcing companies to continually realign their strategies. Regardless of size or sector, organizations are endeavoring to get closer to markets and customers, while also improving flexibility and responsiveness. At the same time, there is unrelenting pressure to reduce costs and maintain a competitive edge. The key to success lies in Business Process Management because effective and efficient business processes—both internal and external—give companies the agility to cope with constant change.

To encourage innovation and growth, companies must leverage Open BPM to develop flexible business strategies. The insight behind Open BPM is that business processes are the building blocks that companies can use to support flexible business models and create service-oriented architectures comprising freely combinable services. Open BPM thus enables the use of new methods for describing processes and managing them independently of the deployed solutions and technologies.

By doing so, Open BPM removes the boundaries and restrictions that hamper the introduction of innovative business processes. With the ARIS lifecycle model and ARIS Platform, IDS Scheer is already committed to an IT vendor-independent strategy. As well as accommodating new description methods, ARIS supports open, vendor-independent standards and transitions to the systems of major technology providers via partnerships and alliances.

To ensure continuous improvement, the various ARIS Platform products map all the phases of the business process lifecycle, from strategy and design through to implementation and controlling.

IDS Scheer takes a modular approach to the different challenges of the market, combining products to create ARIS solutions, such as, Enterprise Architecture Management and Business-Driven SOA Management.

Today, IDS Scheer is a leading global provider of enterprise architecture (EA) tools, a significant new market that has enjoyed double-digit growth over the past three years. IDS Scheer's ARIS IT Architect is a powerful enterprise architecture management product that companies can deploy to efficiently harmonize and standardize their business and IT environments. Storing all data and information centrally in the ARIS repository enables easy creation of the necessary architecture and detail views. In addition, ARIS IT Architect supports architecture standards, such as, DoDAF, TEAF, TOGAF, Zachman, and IT City Planning.

Service-oriented architectures (SOAs) are also gaining in importance. ARIS SOA Architect enables enterprises to convert business processes into executable technical processes. It features automated transformation of enriched business processes into platform-independent, executable BPEL processes. The integrated ARIS Value Engineering procedural model supports the creation of a comprehensive SOA

repository for all business and technical elements of an SOA, ensuring a transparent business process and service landscape at all times.

Having introduced IT solutions to support their processes, companies need to maintain a strong process focus in order to reap the full benefits. A modern, agile organization should regularly examine the effectiveness of its process orientation by constantly measuring and improving real-world processes and their results. ARIS Process Performance Manager (ARIS PPM) automates measurement and analysis of operational business processes based on IT runtime data, establishing a vital knowledge base that reveals where and how business processes can be improved.

This brochure gives details of training courses covering all ARIS Platform products. The experienced trainers and consultants at the IDS Scheer Academy will show you how to use ARIS products effectively, backed by examples from real-world projects.

Courses on all subjects can also be delivered in-house. Just ask us for details—we will be glad to discuss custom training options.

We wish you every success with our training program.

Sincerely,

Wolfram Jost

Executive Board Member, IDS Scheer AG

Contents

BPM Without Limits – Open Business Process Management with ARIS Platform	3
ARIS Product Training Concept – Develop Your Skills to Achieve Business Process Excellence	5
Strategy Platform	6
▶ Defining and Managing Enterprise Strategies with ARIS Balanced Scorecard – ABSC	6
NEW! ▶ Process Costing with ARIS Business Optimizer – ABO	7
▶ Dynamic Simulation with ARIS Business Simulator – ABS	8
Design Platform	9
▶ Business Process Modeling with ARIS Business Designer – ABD	9
▶ Managing ARIS Projects with ARIS Business Architect – ABA	10
NEW! ▶ Designing and Improving IT Architectures with ARIS IT Architect – ITA	11
ARIS Implementation Platform	12
▶ Implementing and optimizing process-driven SAP Solutions with ARIS for SAP Netweaver – A4NW	12
▶ Object-Oriented modeling with ARIS UML Designer – AUD	13
NEW! ▶ Service-Enabling of Processes with ARIS SOA Architect – ASOA	14
ARIS Controlling Platform	15
▶ Analyzing Processes with ARIS PPM – APPM1	15
NEW! ▶ Extended Analysis of Processes with ARIS PPM – APPM2	16
▶ Advanced Reporting with ARIS PPM – APPM3	17
▶ Internal Control Management (Sarbanes-Oxley Act) with ARIS Audit Manager – AAM	18
Technical Expert Level Workshops	19
▶ ARIS System Maintenance and Administration – ADM	19
NEW! ▶ ARIS Report Script Customizing – RSC	20
NEW! ▶ ARIS Business Publisher Administration and Configuration – ABP	21
About IDS Scheer Academy – Your Points of Contact	22
General Information and Business Conditions	23
Registration	24

ARIS Product Training Concept – Develop your skills to Achieve Business Process Excellence

Modular training structure insures the right skill level to successfully accomplish your job

ARIS product training courses are offered for all ARIS Platform products. Depending on your company role, you may need to build up expertise covering several Platform products.

IDS Scheer Academy courses are structured around general skill levels and the Business Process Excellence Lifecycle – from strategy and design through to implementation and controlling.

Starting with **BASIC LEVEL**, the ARIS Business Designer course covers the general methodology and framework of ARIS Platform and using the ARIS design tool. Other training courses at this level provide the information required to operate tools, such as, the Process Performance Manager and ARIS Audit Manager clients in your daily work as a process owner or risk manager.

INTERMEDIATE LEVEL courses introduce product modules that all require the basic skill level. These products offer proven methods and functionalities in specific areas, such as, managing process costs using ARIS Business Optimizer, designing and managing IT architectures using ARIS IT Architect, and designing and implementing processes using ARIS SOA Architect.

EXPERT LEVEL can be divided into two areas: solution expertise and technical product expertise.

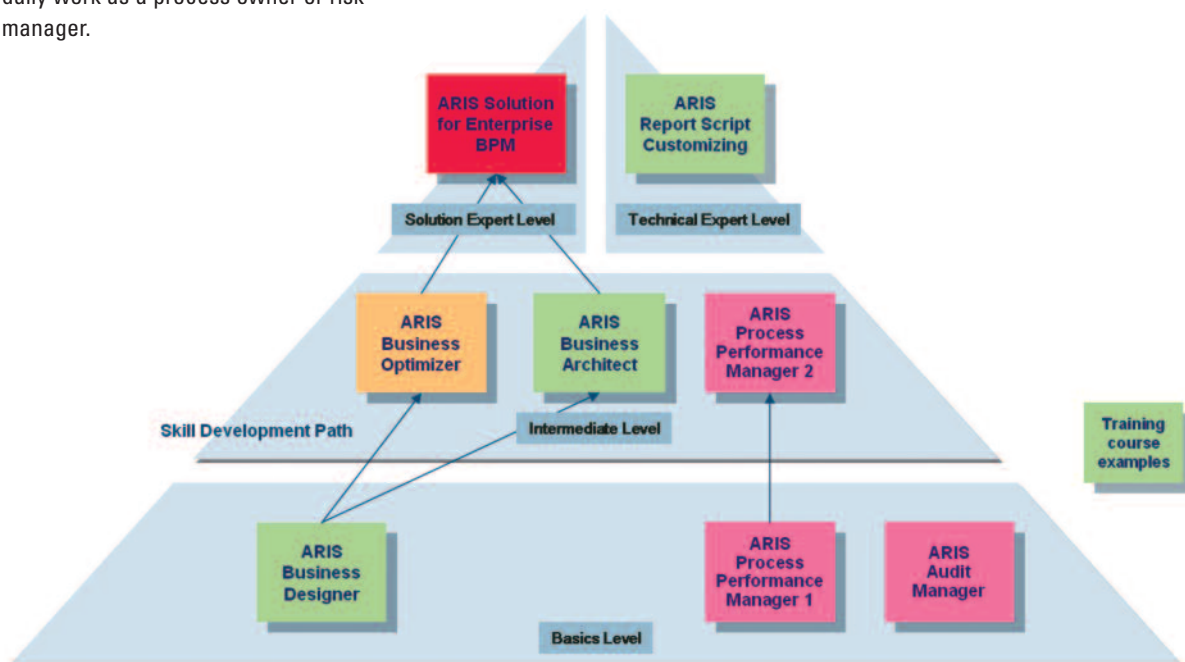
The solution expert courses focus on ARIS solutions that integrate different products within an end-to-end project solution described by ARIS Value Engineering. The course content requires a good understanding of the ARIS methodology and the relevant ARIS products for the respective solution scenario.

IDS Scheer therefore regards this as the highest level in terms of expertise. The comprehensive knowledge required is normally associated with project managers or BPM competence centers.

The technical expert courses concentrate on the more technical aspects of ARIS Platform in terms of the overall administration of the ARIS Business Server. They also cover the configuration options of different tools, such as, the configuration of ARIS reports, publishing solutions, and performance management solutions.

For your orientation, the knowledge requirements are stipulated for each course and the level of expertise is indicated using this graphic with the respective level highlighted:

Basic	Intermediate	Expert
-------	--------------	--------



Defining and Managing Enterprise Strategies with ARIS Balanced Scorecard – ABSC

Strategic Corporate Planning using Key Performance Indicators

In order to survive in an increasingly dynamic market, enterprises must link business processes to their evolving corporate strategies. Balanced scorecard (BSC) systems use trusted key performance indicators (KPIs) to support the management activity built around these strategies. ARIS BSC contains all the tools needed for the design, implementation, management, and realignment of a strategy project. This software product enables definition of both strategic corporate objectives and cause-and-effect relationships across multiple perspectives. As well as identifying strategic processes, ARIS BSC provides reporting on all necessary performance indicators and activities. All balanced score-card elements can be analyzed using other ARIS tools.

Benefits

The course will help you to apply the visibility of the ARIS repository to the strategic view of an enterprise. The top-down approach – from strategy to processes – will enable you to support management decision-making based on the content and relationships generated in ARIS. You will learn all necessary modeling requirements for setting up a BSC system in your company using ARIS Balanced Scorecard.

Requirements

Completion of the Business Process Modeling with ARIS Business Designer (ABD) training course or equivalent knowledge.

Basic

Intermediate

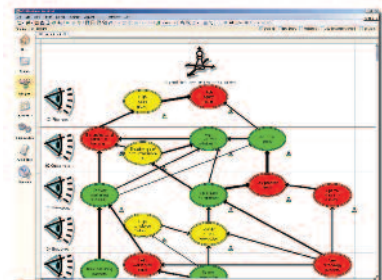
Expert

Course structure

- ▶ Method: Lecture, demonstration, hands-on the system exercises, discussion
- ▶ Duration: 1 day

Course content

- ▶ Concept of the balanced scorecard (BSC) as a management instrument
- ▶ Designing a BSC system in ARIS
- ▶ Reporting and analyzing a BSC system
- ▶ Publishing the BSC system in your intranet
- ▶ Additional methods in the strategic environment

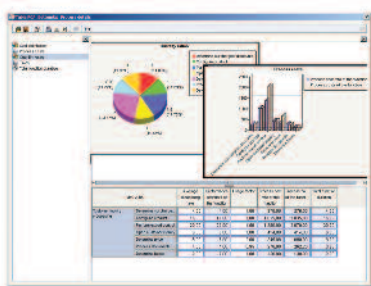


Process Costing with ARIS Business Optimizer – ABO |

Transparency for Process Planning and Process Cost Management

To optimize processes, businesses need meaningful data that provides insights into different aspects of a workflow. This data normally consists of key performance indicators (KPIs), which are derived from the operational process. By combining process structures with KPIs, it is possible to reach precise conclusions about issues, such as, process costs and personnel requirements planning.

ARIS Business Optimizer is a Web-based tool for process optimization using KPIs. It delivers process transparency by modeling operational structure and process organization, while also providing insights based on KPIs for IT and cost management activities. ARIS Business Optimizer helps users to define best-practice procedures and make informed decisions.



Benefits

Based on the process costing scenario, this course provides an introduction to the opportunities delivered by ARIS Strategy Platform.

The course introduces the benefits of process costing and introduces possible Key Performance Indicators (KPIs) and calculation methods which are supported by the new standard rule set. The relationship between ARIS Design Platform and ARIS Business Optimizer is explained, focusing on business process architecture and recommended ARIS methodology conventions.

The handling of ARIS Business Optimizer is introduced using practical examples. The strength of the presentation of the results is taught using new tables and reports.

At the end of the course, you will be able to use ARIS Business Optimizer to analyze your business processes based on KPIs.

Requirements

Completion of the Business Process Modeling with ARIS Business Designer (ABD) training course or equivalent knowledge.

Basic Intermediate Expert

Course structure

- ▶ Method: Lecture, demonstration, hands-on system exercises, discussion
- ▶ Duration: 2 days

Course content

- ▶ Overview ARIS Business Optimizer scenarios, objectives and benefits
- ▶ Introduction to the concept of ARIS Business Optimizer
- ▶ Process Costing - Basics, KPIs, calculation methods
- ▶ The business optimization process
- ▶ Describing enterprise architectures and structuring business processes using the ARIS methodology
- ▶ Preparing the ARIS Business Optimizer database
- ▶ Evaluating processes with various key performance indicators
- ▶ Interpreting the evaluation results using tables, charts and reports
- ▶ Improving business processes and performing what-if analysis and as-is/to-be comparisons

Dynamic Simulation with ARIS Business Simulator – ABS

Analyzing and Optimizing Business Processes

How do you establish efficient processes? How do you identify which process variants are better than others before they are actually implemented? How do you know what resources are required to execute a process or where bottlenecks will arise during process execution?

These questions can only be answered by analyzing the dynamic behavior of processes. This is where ARIS Business Simulator comes into play, with its Web-based simulation of business processes. By enabling evaluation of both executability and efficiency, the software supports decision-making in reengineering, benchmarking, and resource planning.

ARIS Business Simulator allows both existing and new processes to be analyzed and improved. The application collects a variety of information during a simulation run that enables the behavior of processes to be assessed. The results are presented in the form of statistics and charts. Data provided includes throughput and wait times, costs, weaknesses, as well as resource requirements and utilization. To evaluate new processes, process variants can be analyzed and the resulting values optimized.

ARIS Business Simulator is the professional tool for dynamic analysis of business processes. Simulation of business processes provides information about the executability of processes, process weaknesses, and resource bottlenecks. In the run-up to cost-intensive process changes, the simulated process performance indicators can be used to evaluate various alternatives and carry out true-to-life benchmarking.

Benefits

The course covers possible application scenarios for ARIS Business Simulator and the procedure for simulating your business processes. You will learn how to describe and configure process models to prepare for simulation. In addition, you will learn how to conduct simulation runs and interpret the results. This will enable you to analyze and optimize your business processes for better performance.

Requirements

Completion of the Business Process Modeling with ARIS Business Designer (ABD) training course or equivalent knowledge.

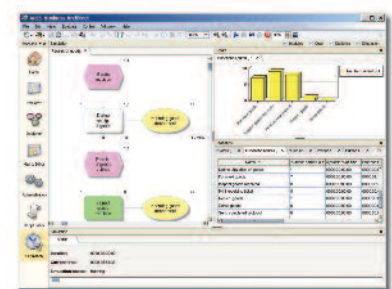
Basic Intermediate Expert

Course structure

- ▶ Method: Lecture, demonstration, hands-on system exercises, discussion
- ▶ Duration: 1 day

Course content

- ▶ Objectives and application areas of business process simulation
- ▶ Use of ARIS Business Simulator
- ▶ The business simulation process
- ▶ Describe enterprise architectures and structuring business processes using the ARIS methodology
 - ▶ Performing process simulation
 - ▶ Interpreting simulation results using animation, charts and statistics
 - ▶ Improving business processes



Business Process Modeling with ARIS Business Designer – ABD |

Enterprise-Wide Transparency as Key Success Factor for Business Process Excellence

Before building or renovating a house, you would commission an architect to draw up a blueprint to ensure that your expectations are met by the final product. Before asking an electrician to put wires into the walls, you would ask the architect to add this information to the plans so that the electrician understands your requirements and knows where exactly to locate the outlets. The objectives and approach for Business Process Excellence are exactly the same. ARIS Design Platform provides answers to comparable questions in an enterprise environment: Who does what, in which order, what is achieved, and what software systems are deployed? This makes it possible to identify organizational, structural, and technical problems in workflows and to unlock improvement potential. Process models can be published worldwide for role-based access. ARIS Business Designer is the Web-based tool for getting started with end-to-end Business Process Management. ARIS Platform uses a central repository for maintaining all relevant information about the enterprise architecture. With its client-server architecture and enhanced user interface, ARIS Business Designer allows even non-technical users to design professional business processes.

Benefits

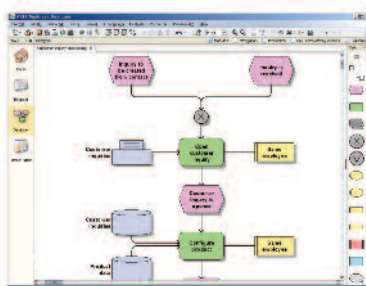
This course provides a basis for understanding the ARIS methodology and using the modeling components of ARIS Platform, including ARIS Business Designer and ARIS Business Architect.

At the end of the course, you will be able to structure and describe all relevant information typically used in an enterprise architecture framework. You will be familiar with describing complex business information in a logical and understandable way using the ARIS methodology. You will also be able to use ARIS Business Designer functionalities to facilitate modeling work.

Requirements

There are no requirements for this course.

Basic	Intermediate	Expert
-------	--------------	--------



Course structure

- ▶ Method: Lecture, demonstration, hands-on the system exercises, discussion
- ▶ Duration: 2 days

Course content

- ▶ Introduction to Business Process Management
- ▶ The IDS Scheer Business Process Lifecycle
- ▶ Modules of ARIS Business Designer
- ▶ Modeling with ARIS Business Designer: Creating library models and process models
- ▶ Testing and evaluation models
- ▶ Presenting and publishing models

Managing ARIS Projects with ARIS Business Architect – ABA

Successfully Set up and Manage ARIS-Based Projects

ARIS Business Architect is Web-based and supports professional, enterprise-wide Business Process Management (BPM). It offers maximum flexibility for modeling, analyzing, and optimizing business processes and benefits from an intuitive user interface.

ARIS Business Architect contains extensive functionality for administering databases, users, scripts, etc. Alongside proven methods like event-driven process chains (EPCs), ARIS also supports BPMN, BPEL, UML, and other architecture concepts, such as, DoDAF, IT City Planning, and Zachman. The conventions for the modeling framework you intend to apply are fully configurable using ARIS Business Architect, including individual layout templates and filters. Defining the conventions is an important first step in any project before mapping the information fragments, because the conventions ensure uniform content in the ARIS repository.

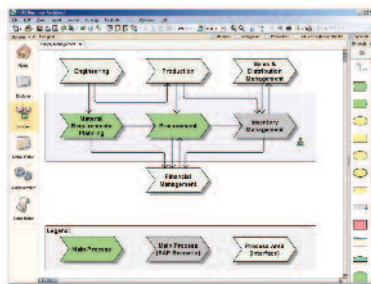
Benefits

At the end of the course, you will be familiar with the key phases of an ARIS modeling project, and be able to implement and administer the ARIS project database with ARIS Business Architect. You will also know how to check ARIS database content and ensure its consistency.

Requirements

Completion of the Business Process Modeling with ARIS Business Designer (ABD) training course or equivalent knowledge.

Basic	Intermediate	Expert
-------	--------------	--------



Course structure

- ▶ Method: Lecture, demonstration, hands-on system exercises, discussion
- ▶ Duration: 2 days

Course content

- ▶ The IDS Scheer ARIS Value Engineering solution
- ▶ Role concept for an ARIS modeling project
- ▶ ARIS configuration: Method configuration and filter, templates, ARIS Symbol Editor
- ▶ Setting up the ARIS project database: Process and model architecture, ARIS group structure, user and access rights management
- ▶ Importing of database content: ARIS Merge
- ▶ Measures for ensuring consistency of the ARIS database
- ▶ Evaluations with ARIS: Search and query, semantic checks, reports, macros
- ▶ Change Management with ARIS Business Architect

Designing and Improving IT Architectures with ARIS IT Architect – ITA |

Successfully Manage IT Complexity and Reduce IT Operation Costs

Corporate business processes are underpinned by complex IT environments, but over time many of these environments become increasingly diverse and difficult to manage. Greater structure and transparency are required so that business-critical IT systems can be identified and aligned with business processes. This necessitates the creation of an enterprise architecture (EA). In turn, establishing an enterprise-wide IT architecture calls for a clearly structured, easy-to-understand description method that includes all the relevant elements of current architecture standards.

ARIS IT Architect provides all the elements needed to build and manage enterprise-wide IT environments and synchronize them with business processes. This software product supports all the necessary planning processes, from documenting and analyzing the existing architecture to establishing a new architecture that is aligned with business processes.

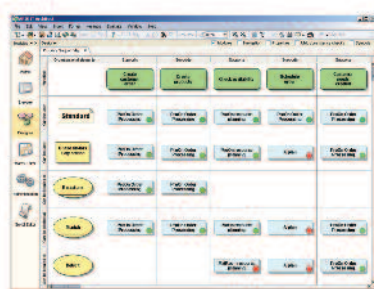
Benefits

This course covers detailed method conventions for designing and managing IT architectures that you can instantly apply to your own work environment. You will be able to successfully build content in the ARIS repository and establish relationships with content from other architecture views. You will know how to address important issues, such as, detecting system redundancy, identifying IT requirements, creating IT system lifecycle reports, and analyzing the impact of business process changes on the relevant IT systems.

Requirements

Completion of the Business Process Modeling with ARIS Business Designer (ABD) training course or equivalent knowledge.

Basic Intermediate Expert



Course structure

- ▶ Method: Lecture, demonstration, hands-on system exercises, discussion
- ▶ Duration: 1 day

Course content

- ▶ Introduction to IT architecture management
- ▶ Designing IT architectures using ARIS IT Architect
- ▶ Reviewing important method aspects: Occurrence vs. definition level; general modeling conventions and preparation of the project database
- ▶ Introducing ARIS structures and models for IT architecture management, including the business process, organizational, information and application architecture
- ▶ Managing IT architectures using ARIS IT Architect
- ▶ Introduction to functionalities such as search & query, semantic checks and reports available in ARIS IT Architect
- ▶ Overview on publishing IT Architectures using ARIS Business Publisher

Implementing and Optimizing Process-Driven SAP Solutions with ARIS for SAP Netweaver – A4NW

To implement the business requirements derived from their corporate strategy, companies need a fast and efficient way of mapping business processes and new business concepts to the SAP solution. Developing a seamless, transparent value chain and designing the corresponding business processes is also a key requirement for adopting SAP's enterprise service-oriented architecture (enterprise SOA). ARIS for SAP NetWeaver enables enterprises to define business-driven requirements from a process perspective. Requirements are mapped using business process models and can be enriched with all the necessary additional information and subjected to analysis. They can also provide a common language between business and IT within the project. The bidirectional interface to SAP Solution Manager enables the models to be constructed on the basis of SAP reference content for a process-driven SAP solution. They can be seamlessly integrated into SAP Solution Manager. These process models therefore represent an important aid to making business decisions, while also ensuring that the required processes can be implemented in the SAP system. A special BPEL interface to SAP Exchange Infrastructure (SAP XI) supports end-to-end integration of existing IT systems.

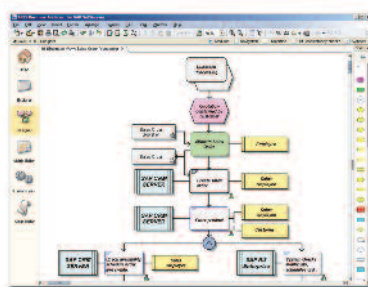
Benefits

At the end of this course, you will be able to implement and optimize your SAP solution in a consistent, structured, and process-oriented manner. This will give you a clear view of the relationship between your corporate processes and the configuration of your systems. Thanks to the integrated use of ARIS for SAP NetWeaver and SAP Solution Manager, you can ensure that your SAP implementation will be documented according to consistent formal standards, from technical design and configuration through to testing.

Requirements

Completion of the Business Process Modeling with ARIS Business Designer (ABD) training course or equivalent knowledge. Completion of the Management of ARIS projects with ARIS Business Architect (ABA) course and basic SAP skills are recommended. Basic knowledge of SAP Solution Manager is desirable.

Basic Intermediate Expert



Course structure

- ▶ Method: Lecture, demonstration, hands-on system exercises, discussion
- ▶ Duration: 2 days

Course content

- ▶ Overview of SAP NetWeaver and SAP Solution Manager
- ▶ Structure of SAP reference models
- ▶ Introduction to functionality of ARIS for SAP NetWeaver
- ▶ Initial Settings in ARIS for SAP NetWeaver
- ▶ ARIS attributes in the SAP environment
- ▶ Overview of ARIS Value Engineering (AVE) for SAP implementation
- ▶ Modeling of technical requirements (BBP)
- ▶ ARIS reports in the SAP environment
- ▶ Procedure: Data Transfer ARIS Solution Manager
- ▶ Reusing processes
- ▶ ARIS HR integration reporting
- ▶ Redocumentation
- ▶ ARIS – SAP XI
- ▶ Extending BPM with services (ESOA)

Object-Oriented Modeling with ARIS UML Designer – AUD |

From Process Models to Executable Applications

All business software serves the same purpose: to provide the best possible support for corporate processes. Close cooperation between user departments and IT staff is therefore key to the success of software projects, whether they involve adapting packaged software or developing custom solutions.

To facilitate this kind of cooperation, ARIS UML Designer combines conventional business process modeling with software development. The result is a seamless, integrated approach to developing business applications, covering every stage from process analysis to system design.

ARIS UML Designer is the first tool to speak the language of business processes and that of software development. Because it supports the entire software development process, there is no need for extra steps outside this process. With ARIS UML Designer, all process modelers and UML modelers work with an integrated software product. Users access process model data and UML content via a Web browser, thereby enabling processing and change management within a multi-user environment.

Benefits

You will acquire the basic skills essential to creating models with ARIS UML Designer. The course is specially designed for systems analysts, software developers, and IT staff who use ARIS for requirements analysis and design purposes.

Requirements

Completion of the Business Process Modeling with ARIS Business Designer (ABD) training course or equivalent knowledge. Basic knowledge of object-oriented principles and UML.

Basic

Intermediate

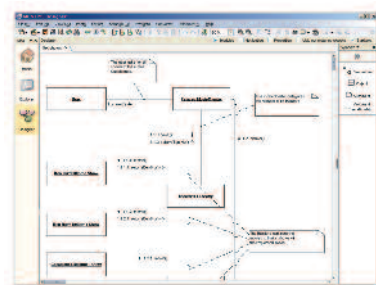
Expert

Course structure

- ▶ Method: Lecture, demonstration, hands-on system exercises, discussion
- ▶ Duration: 1 day

Course content

- ▶ ARIS method overview
- ▶ Process and object-oriented modeling concepts
- ▶ Modeling with ARIS (review of basic knowledge): Processes, organizational structure; occurrence versus definition level
- ▶ UML (review of basic knowledge) and UML integration with ARIS
- ▶ UML modeling with ARIS
- ▶ The UML package tree and global settings
- ▶ The stereotype concept
- ▶ Architectures and project procedures
- ▶ Data exchange and reporting



Service-Enabling of Processes with ARIS SOA Architect – ASOA

Business Processes as the Basis for a Business-Driven SOA

A service-oriented architecture (SOA) starts and ends with a company's business processes. Enterprises can only adapt quickly to new market requirements if their business processes are properly modeled and then translated into technical services in a structured fashion. ARIS SOA Architect enables users to design an SOA based on the business processes deployed in the various departments. The Service Browser in ARIS SOA Architect makes it easy to identify services for automating business activities. Because services are linked to business activities in the ARIS process model, executable BPEL processes can be generated automatically. After the BPEL processes have been exported, they can be implemented and executed on platforms, such as, Oracle Process Manager, IBM WebSphere, BEA WebLogic, and SAP XI. Combining the business and systems layers of an SOA in ARIS reveals interdependencies and allows informed intervention. One mouse-click shows which service is used in which processes. Thus, if a service fails, there is a way to find out fast which business process is impacted and who needs to be informed with regard to the commercial and IT responsibility. An SOA therefore ends as it begins—by supporting business processes.

Benefits

At the end of the course, you will be aware of the benefits provided by SOAs and be able to implement a SOA using the ARIS SOA methodology. You will know the relevant SOA artifacts at different levels of abstraction and the steps needed to define a service. You will be familiar with the import and export functionalities for various standards, such as, BPEL, WSDL, XML, XMI, and XSD. You will have refreshed your basic XML knowledge. You will understand the fundamental touchpoints of SOA and UML and be familiar with the basics of ARIS UML Designer.

Requirements

Completion of the Business Process Modeling with ARIS Business Designer (ABD) training course or equivalent knowledge. Basic knowledge of the BPEL, WSDL XSD, and UML standards.

Basic Intermediate Expert

Course structure

- ▶ Method: Lecture, demonstration, hands-on system exercises, discussion
- ▶ Duration: 2 days

Course content

- ▶ Introduction to Business Process Management & SOA
- ▶ Overview on the basic SOA concept
- ▶ Brief introduction to the ARIS methodology
- ▶ From process design to process execution – a detailed walk thorough of IDS Scheer's proven 10-step-procedure model
- ▶ Workflow patterns
- ▶ Introduction to integrated structures in process models
- ▶ UML Modeling with ARIS SOA Architect



Analyzing Processes with ARIS PPM – APPM1 |

ARIS PPM 4.1 – Discover the Secret of Successful Process Managers!

ARIS PPM is a patented software solution for measuring, analyzing and visualizing live business processes.

ARIS PPM enterprise dashboards provide a unified view of processes, associated key performance indicators (KPIs), and achievement of business objectives. They provide a coherent starting point for various in-depth im-pact analyses of process performance. Process mining makes it possible to automatically identify factors that in-fluence specific KPIs, monitoring keeps an eye on processes that are not fulfilling objectives, while process chains and communication graphs reveal process-related and organizational behavior patterns and show individual processes in the course of execution. In-tuitive navigation enables simple and flexible configuration of charts and tables showing KPI values, etc.

By measuring KPIs and drilling down to underlying processes, ARIS PPM provides an objective decision-making tool at both the strategic and operational level, paving the way for continuous process improvement from the business perspective. As the saying goes, nothing can be improved unless it has been measured!

Benefits

This course outlines the basic principles and procedural model of process performance management. You will learn how to apply predefined performance dashboards, management views, and reports, as well as how to configure your own initial analyses.

Using a running example (sales processes), you will conduct a complete root-cause analysis. Starting with KPI evaluation (process cycle time, delivery performance, etc.), you will then identify the factors impacting individual KPIs (sales organization, customer, material, etc.), and proceed to in-depth views of processes during execution (feedback loops, execution path complexity and probability, etc.).

Requirements

None

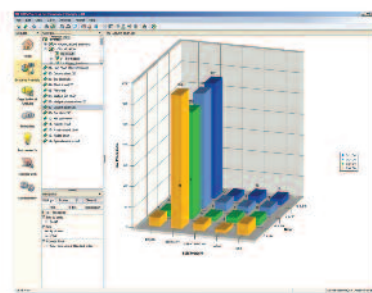
Basic	Intermediate	Expert
-------	--------------	--------

Course structure

- ▶ Method: Lecture, demonstration, hands-on system exercises, discussion
- ▶ Duration: 1 day

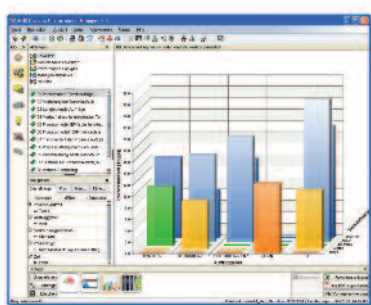
Course content

- ▶ PPM Management – Overview
- ▶ ARIS PPM – Introduction
 - ▶ Graphical user interface – navigation
 - ▶ Analysis components (KPIs, dimensions, filters, display settings)
 - ▶ Analysis development
 - ▶ Favorites
- ▶ Performance Analysis & Optimization Process
 - ▶ Presentation of results – how to apply:
 - Enterprise dashboards
 - Management views
 - Reports
 - ▶ What? – KPI evaluation and assessment
 - ▶ How? – Identifying influencing factors
 - ▶ Why & Who? – Identifying the process structure



Extended Analysis of Processes with ARIS PPM – APPM2

Utilize the Advanced Functionalities of ARIS PPM 4.1 to Analyze Your Processes



Benefits

This course briefly reviews the content covered by APPM1. Using this as a basis, you will learn about more advanced process analysis techniques, including process monitoring, process mining, ABC analysis, and organizational analysis. In addition, you will familiarize yourself with administration tasks (user management, etc.).

Using a running example (sales processes), you will conduct a complete root-cause analysis. Starting with KPI evaluation, you will then identify factors that impact process efficiency, and proceed to an in-depth view of organizational communication patterns. You will learn how advanced process analysis techniques can be used to drill down from KPIs (delivery performance, etc.) to important dimension factors (sales organization, customer, material, etc.) and communication patterns (who does what, who delegates to whom?).

Requirements

Completion of the APPM1 course.

Basic

Intermediate

Expert

Course structure

- ▶ Method: Lecture, demonstration, hands-on system exercises, discussion
- ▶ Duration: 1 day

Course content

- ▶ ARIS PPM – Briefing
 - ▶ Review APPM 1 course
 - ▶ ARIS PPM – quick start
- ▶ Performance Analysis & Optimization Process
 - ▶ What? – KPI evaluation
 - Managing planned and alarm values
 - Monitoring
 - User-defined (online) KPIs
 - ▶ How? – Identifying influencing factors
 - Top-flop evaluation
 - Process mining
 - ABC analysis
 - ▶ Why & Who? – Identifying the organizational structure
 - Organizational analysis
 - ▶ ARIS PPM administration
 - User management, access privileges etc.
 - Overview ARIS PPM go-live and productive phase

Advanced Reporting with ARIS PPM – APPM3 |

Prepare Custom Analyses and Reports for Impressive Performance Dashboards with ARIS PPM 4.1



Benefits

This course is aimed at managers and decision-makers and provides a comprehensive overview of how to customize management views, reports, and enterprise dashboards.

It describes how to consolidate various predefined analyses and corresponding filter settings within a management view. You will also learn how to combine predefined analyses within a PDF-based report. Performance dashboards facilitate unified views of hierarchical processes, associated KPIs, and achievement of business objectives. You will discover how to put all these items together using a performance dashboard.

All customizing activities use sophisticated generation engines (graphical editor, WYSIWYG principle).

Requirements

Completion of the APPM1 course.
 Completion of the APPM2 course is recommended.

Basic

Intermediate

Expert

Course structure

- ▶ Method: Lecture, demonstration, hands-on system exercises , discussion
- ▶ Duration: 1 day

Course content

- ▶ ARIS PPM – Briefing
 - ▶ Review APPM 1/2 courses
 - ▶ ARIS PPM – quick start
- ▶ Presentation of results – customizing of:
 - ▶ Management views
 - ▶ Performance dashboards
- ▶ Summary, Outlook, Q & As

Internal Control Management (Sarbanes-Oxley Act) with ARIS Audit Manager – AAM

The Workflow-Based Test Environment of the ARIS Solution for GRC

Organizations need to ensure – and be able to demonstrate – that their workflows meet a wide range of legal requirements and standards. The ARIS Solution for GRC from IDS Scheer offers customers a software tool for integrating current and future compliance requirements into their business processes.

ARIS Audit Manager is an intuitive software product that helps users to conduct tests by providing a corresponding workflow and all the relevant information. It enables organizations to carry out the necessary compliance activity with maximum efficiency and can easily be extended to accommodate new legislation or standards. ARIS Audit Manager is part of the ARIS Solution for GRC.

Benefits

At the end of this workshop, you will be able to document internal controls with process orientation and perform the necessary tests of the controls. In addition, you will know how to identify, document, and evaluate your SOX Section 404-relevant corporate processes and internal controls using ARIS Business Designer and ARIS Audit Manager. You will be able to evaluate your processes and internal controls using standard reports and analyses. Overall, you will benefit from a proven procedure for efficient compliance with SOX Section 404 using ARIS.

Requirements

None – basic ARIS knowledge method helpful but not crucial.

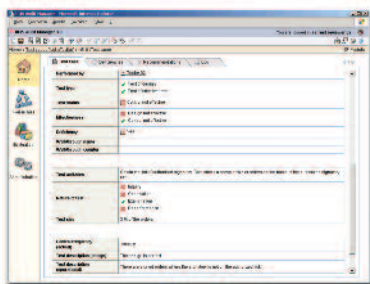
Course structure

- ▶ Method: Lecture, demonstration, hands-on system exercises , discussion
- ▶ Duration: 1 day

Course content

- ▶ Introduction to AAM 3.0
- ▶ Testing and valuation
- ▶ Deficiency management
- ▶ Sign-Off management
- ▶ Survey management
- ▶ AAM administration functionalities
- ▶ Navigating in the AAM modules

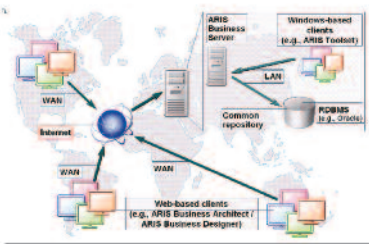
Basic	Intermediate	Expert
-------	--------------	--------



Technical Expert Level Workshop: ARIS System Maintenance and Administration – ADM

Benefits

At the end of this course, you will be able to perform all essential installation, maintenance, and administration activities in the ARIS environment. You will know how to identify error sources without assistance and be able to work out solutions to problems arising during the installation and maintenance of ARIS.



Course structure

- ▶ Method: Lecture, demonstration, hands-on system exercises, discussion
- ▶ Duration: 1 day

Requirements

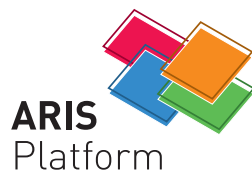
Knowledge of technical administration of Windows; knowledge of networks (TCP/IP); basic ARIS knowledge advantageous.

Basic	Intermediate	Expert
-------	--------------	--------

Workshop content

The content is adapted to participants' specific requirements. Our consultants will get in touch with you before the course in order to define the agenda. The following items are typically covered:

- ▶ Technical configuration of the ARIS Design Platform
- ▶ Installation scenarios (LAN, WAN, scaling)
- ▶ Supported database systems
- ▶ Windows and Web client
- ▶ Installing the system
- ▶ Setting up and configuring the application server
- ▶ Setting up and configuring the various clients
- ▶ Setting up and configuring the database
- ▶ Managing the systems in a multi-user environment
- ▶ Operating a Microsoft-based application server
- ▶ Maintenance tasks (e.g., backup, recovery)



ARIS Report Script Customizing – RSC

ARIS Reporting enables you to evaluate and change database content, e.g., by running calculations on your models or entering attribute values in your database.



Benefits

At the end of this workshop, you will be able to analyze and edit information from your own company processes to suit your requirements. You can do this with the standard ARIS evaluation reports or by writing your own report scripts using the Report Wizard/Script Editor.

Requirements

Basic ARIS knowledge, JavaScript (main focus), and Visual Basic programming knowledge.

Basic

Intermediate

Expert

Course structure

- ▶ Method: Lecture, demonstration, hands-on system exercises, discussion
- ▶ Duration: 1 day

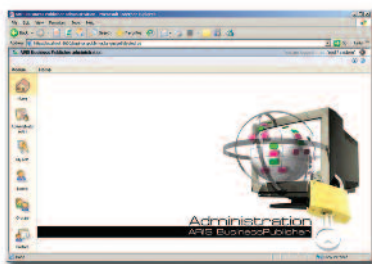
Workshop content

The content is adapted to participants' specific requirements. Our consultants will get in touch with you before the course in order to define the agenda. The following items are typically covered:

- ▶ ARIS methodology
 - ▶ General overview
 - ▶ Evaluation filters
- ▶ ARIS Report Function Library
- ▶ ARIS Report Development
- ▶ ARIS Report Wizard
- ▶ Sample reports
- ▶ Tips and tricks

ARIS Business Publisher Administration and Configuration – ABP |

With ARIS Business Publisher, you can access your business processes wherever you are at the click of a mouse. Distances and time zones are no longer important. Whatever your location, you can quickly access the required process information based on your position or role.



Benefits

At the end of this workshop, you will be able to publish your company processes on your intranet, for example, so that they can be accessed by all employees of the company.

Requirements

Basic knowledge of ARIS framework and methodology essential.

Basic

Intermediate

Expert

Course structure

- ▶ Method: Lecture, demonstration, hands-on system exercises, discussion
- ▶ Duration: 1 day

Workshop content

The content is adapted to participants' specific requirements. Our consultants will get in touch with you before the course in order to define the agenda. The following items are typically covered:

- ▶ Overview of ARIS Business Publisher
- ▶ Configuring ARIS Business Publisher
- ▶ Principles of custom product configuration
- ▶ Tips and tricks
- ▶ Presentation of complex, custom ARIS Business Publisher applications

About IDS Scheer Academy – Your Points of Contact



IDS Scheer Academy offers extensive services for developing and expanding process management in your company, as set out below.

Public Training Courses

Our public training courses cover the following areas:

- ▶ Business Process Strategy
- ▶ Business Process Design
- ▶ Business Process Implementation
- ▶ Business Process Controlling

Our competent and experienced trainers deliver a broad range of training programs based on these topics.

In-House Training Courses, Workshops and Coaching

For your individual qualification requirements, we offer complete solutions and tailored services. Our customer services include individually adapted in-house seminars, custom workshops, and on-site coaching.

Customized ARIS Solutions

We offer a partnership to you for conception and implementation of individual solutions in the ARIS product environment. Based on your unique project requirements, we team with you to devise possible solution scenarios so that you can choose the solution that best suits your needs.

Questions? Need a personalized training? Contact your local ARIS Academy. Visit www.ids-scheer.com/academy.

General Information and Business Conditions

Registration and confirmation

Registration must be made in writing by post, fax, e-mail, or online. Registrations received by IDS Scheer are processed in the order in which they are received. Orders are confirmed in writing soon after receipt, at which point the order becomes binding.

Hotel and arrival

You will receive our list of recommended hotels and a map giving directions to the location of the event along with registration confirmation. You are responsible for making your reservations and for your travel costs and accommodation costs.

Cancellation of course

IDS Scheer reserves the right to change or cancel course dates. If IDS Scheer cancels a course, customers will be informed in writing at least 7 calendar days before the scheduled start of the course.

Training times

Course days begin regularly at 9.00 a.m. and end at around 5.00 p.m. However, when events last more than one day, the first day begins at 10.00 a.m.

Training materials

All attendees receive printed documentation for their course at the start of our public training sessions. The printed and digital course documentation and software provided must not be copied or otherwise reproduced.

Cancellation or change of registration

Customers can cancel or reschedule their participation in a training course without penalty no later than 14 calendar days before the contractually agreed course date. If customers cancel within 14 calendar days before the start of the course, they must pay the course fee in full. However, customers may then participate in the course within a period specified by IDS Scheer without further payment.

Cancellation of course

If the training course is canceled due to trainer illness, force majeure, or other circumstances or events beyond the control of the organizer, customers cannot assert any claim regarding the performance of the event. In such cases, the organizer shall not be responsible for the reimbursement of travel or accommodation costs, or other consequent losses. The organizer is only liable for the cancellation of a course if this is caused intentionally or through gross negligence.

Course content and preconditions

Trainers will deliver the course content described in the catalog, provided this is possible given the participants' level of knowledge. To meet our high quality course standards and ensure that knowledge is acquired by participants in the best possible way, our trainers can adapt course content to suit the needs of the group where required. Participants are requested to familiarize themselves with the training course requirements before registration.

Prices

The published course prices are net of sales tax. The listed prices are per participant and include training materials, lunch, and refreshments.

Certificates of attendance

We issue certificates to confirm participation in our events.

Invoicing

Unless otherwise agreed, invoices are issued after the course. Invoices are payable within 14 days of the invoice date, net terms.

Place of jurisdiction and applicable law

If the IDS Scheer customer is a business person, legal entity under public law, or public legal body, the following stipulation applies with regard to all disputes arising from the training course contract: The place of jurisdiction is the office of the IDS Scheer subsidiary with whom the contract was concluded.

Severability

If any provisions of this contract are held to be void or invalid in whole or part, or should the contract contain any gaps, the remaining provisions shall be unimpaired. The invalid provision shall be replaced by such provision as comes closest to the meaning and intention of the invalid provision. In the event of any gaps, a provision is considered to apply that corresponds to what would probably have been agreed in accordance with the meaning and intention of this contract, had the partners contemplated the eventuality prior to concluding the contract.

IDS Scheer AG

Headquarters
Altenkessler Str. 17
66115 Saarbruecken
Phone: 49 681 210-0
Fax: 49 681 210-1000
E-mail: info@ids-scheer.com